

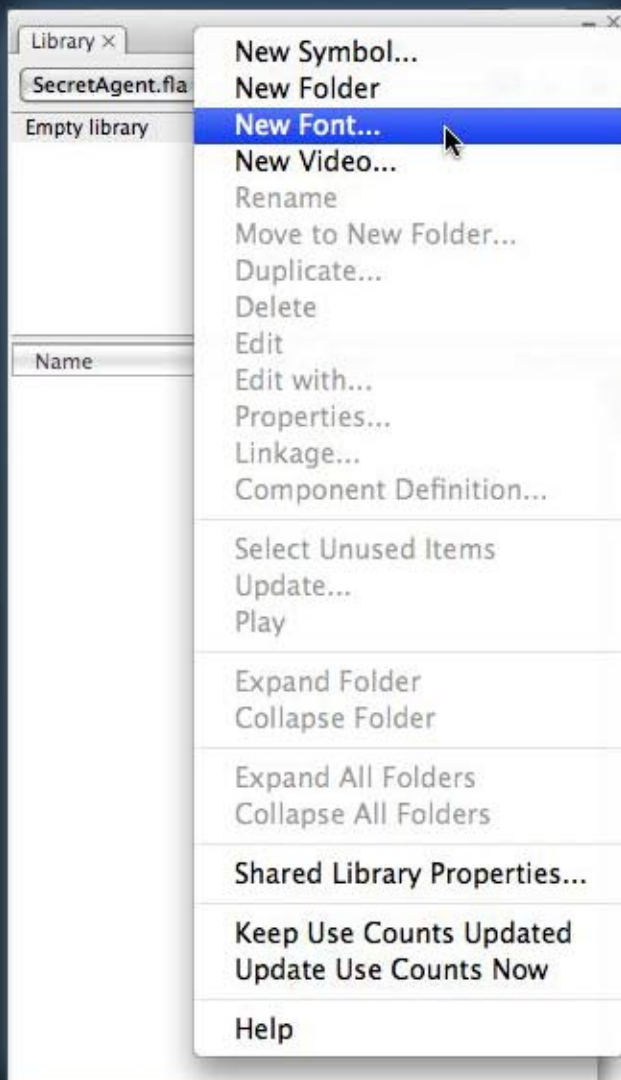


# SHOWIT SITES

## Creating Font Files For Showit Sites

The Flash Player inside of most web browsers does not have the ability to handle a normal font file (TTF or OTF). Instead the Player needs to load a Flash SWF file with a font embedded inside of it. To do this you will need Adobe Flash CS3 or CS4.

In this example, we will be creating a font file from the A.C.M.E. Secret Agent font for use inside of Showit Sites. The Secret Agent font has three faces: regular, bold, and italics.



Open up a new Actionscript 3.0 FLA in Adobe Flash. Save the FLA with any easy to identify name. The name is not important but try to avoid spaces and special characters.

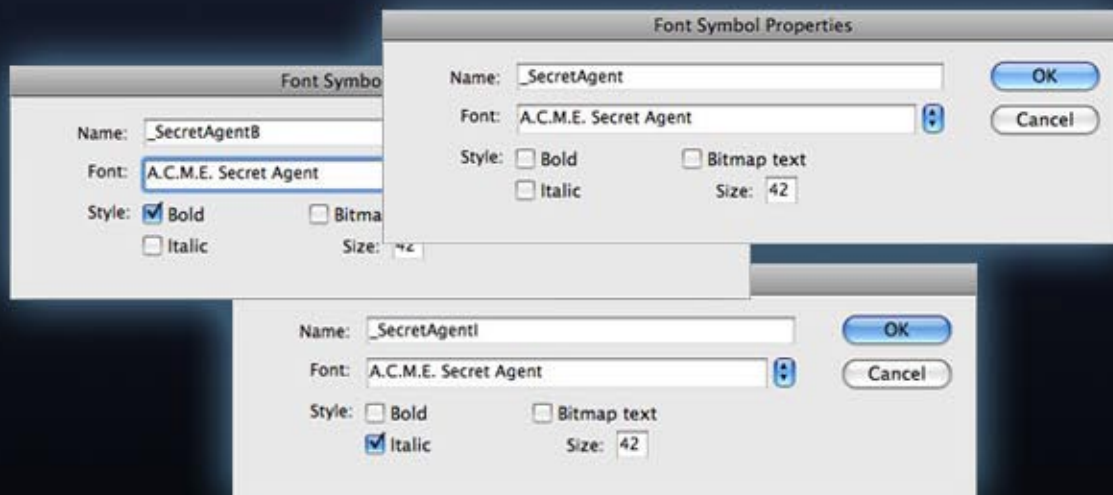
Inside Flash on the Library panel, right click or choose the right hand drop down menu and select "New Font..."



# SHOWIT SITES

## Creating Font Files For Showit Sites

In the dialog, enter a name with an underscore like "\_SecretAgent" with no spaces. Choose the appropriate font in the drop down and be sure to make note of exactly how the font name appears in the drop down. You will use this font name later.



You will need to choose "New Font..." up to four times for all the different types of font faces (regular, bold, italics, bold italics).

Each time you select the appropriate check boxes for bold and italics and add the appropriate abbreviation to the end of the name. See the pictures above and the text below:

Regular        = \_SecretAgent  
Bold            = \_SecretAgentB  
Italics        = \_SecretAgentI  
Bold Italics = \_SecretAgentBI

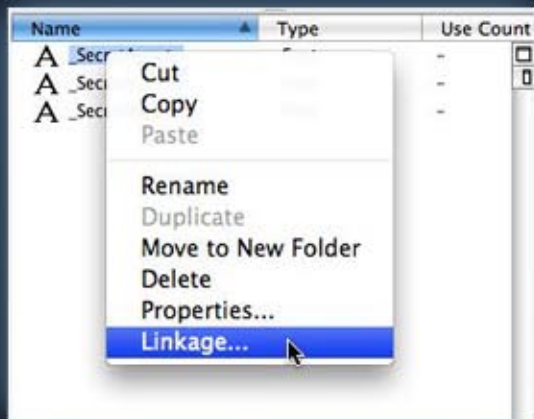
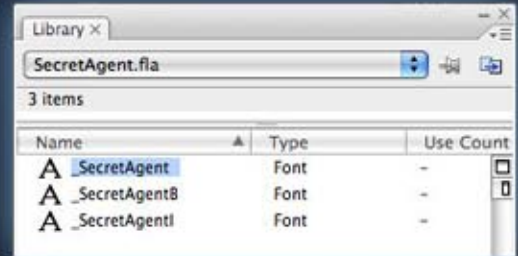
Do not worry about the "Bitmap text" or Size options these are not used.



# SHOWIT SITES

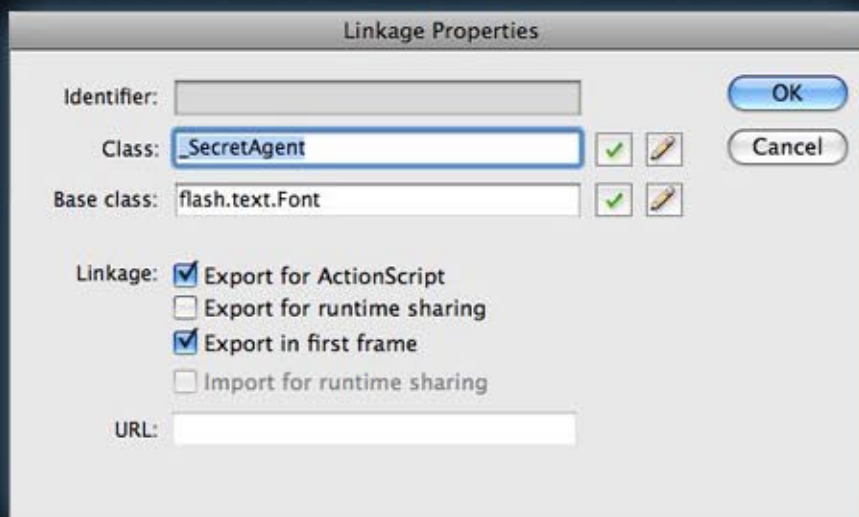
## Creating Font Files For Showit Sites

When you are finished you should have anywhere from 1-4 different items in your Library panel. This will depend on what faces are available for the font you are using.



For each item in the Library panel you need to add linkage. Right click on the item and select "Linkage..."

Select the check box for "Export for Actionscript" which will automatically fill in the rest of the information like the picture below.





# SHOWIT SITES

## Creating Font Files For Showit Sites

The next step is to add some minor Actionsript to make sure the font will get used properly when it is loaded into Showit Sites.

In the Actions panel type:

```
1 import flash.text.Font;
2
3 var fontName:String = "Secret Agent";
4 var cssName:String = "A.C.M.E. Secret Agent";
5
6 Font.registerFont(_SecretAgent);
7 Font.registerFont(_SecretAgentB);
8 Font.registerFont(_SecretAgentI);
```

```
import flash.text.Font;

var fontName:String = "Secret Agent";
var cssName:String = "A.C.M.E. Secret Agent";

Font.registerFont(_SecretAgent);
Font.registerFont(_SecretAgentB);
Font.registerFont(_SecretAgentI);
```

Replace references to Secret Agent with the appropriate names for your font.

The fontName is used to describe the font in drop down boxes inside of Showit Sites. Spaces are allowed, but try to make the name concise and avoid special characters.

The cssName must be copied exactly from the drop down menu where you created the "New Font..." item in the Library panel. If the font does not work, this name is most likely wrong.

Each item in the Library panel must be registered and have its own version of the last line. Use the name as it appears in the Library panel.

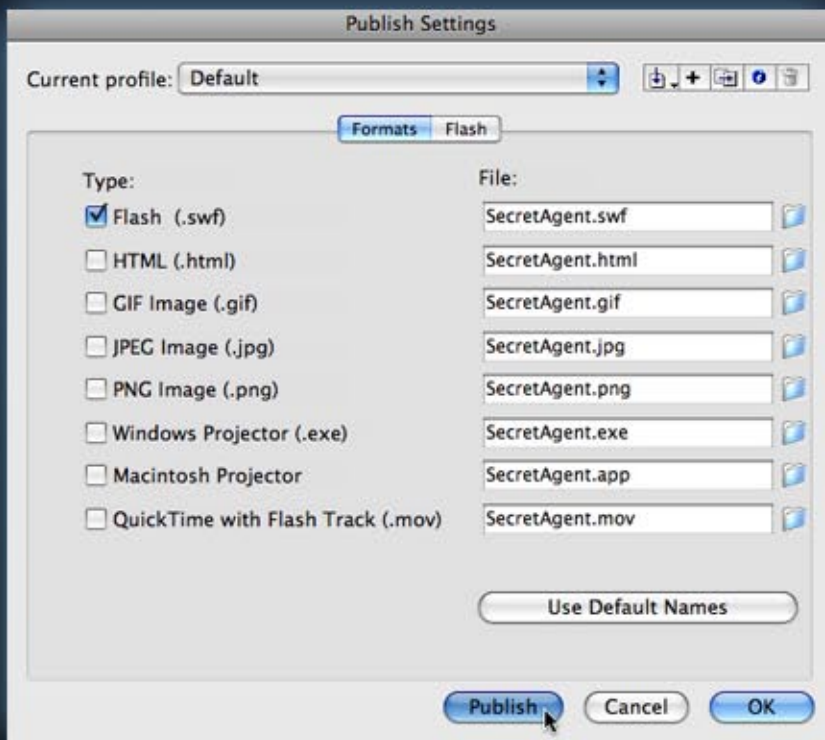
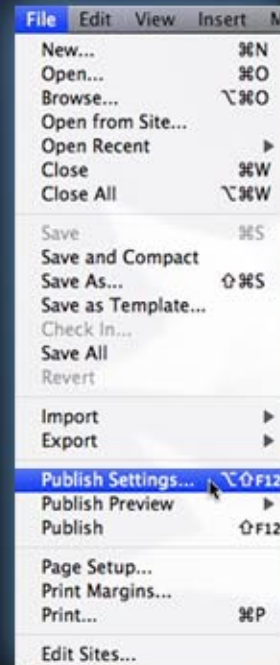


# SHOWIT SITES

## Creating Font Files For Showit Sites

The final step inside of Flash CS3 is to publish what you have just created into a SWF file for use with Showit Sites.

Go to File >> Save and make sure that you have saved all of the changes you have made.



Go to File >> Publish Settings...

In the Publish Settings window that appears, uncheck all of the types except for Flash (.swf)

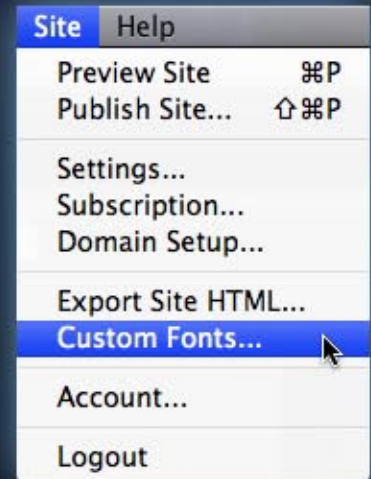
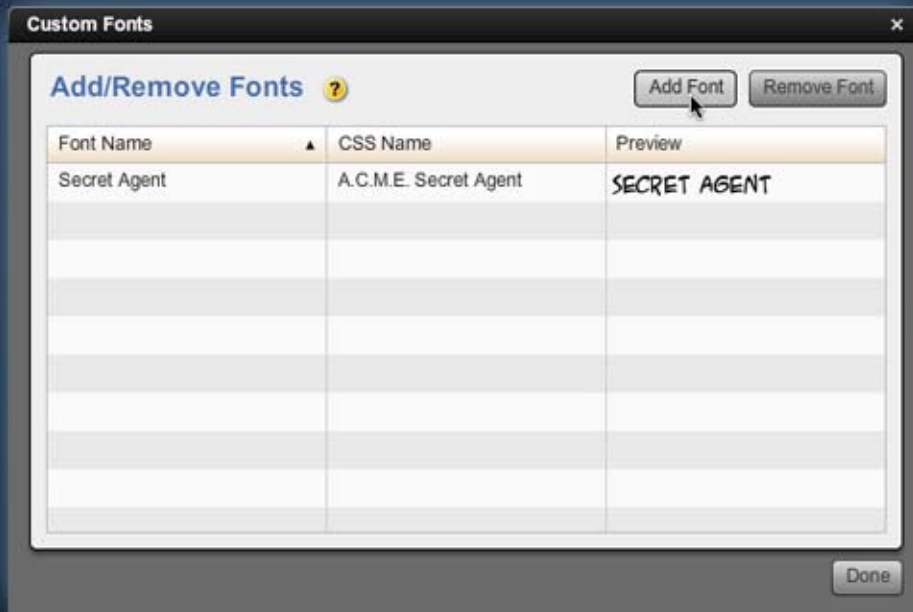
Then click Publish at the bottom. This will create a SWF file located in the same folder that you saved the original file in.



# SHOWIT SITES

## Creating Font Files For Showit Sites

Open up Showit Sites and go to the menu  
Site >> Custom Fonts...



In the Custom Fonts window select Add Font and choose the SWF file you just published in Flash CS3.

Showit Sites will check to make sure the font file is valid, then add the font to the list of custom fonts.

---

\* If your font file is not valid and there is a problem, try checking the following:

- The cssName matches exactly with what you see in the Flash CS3 drop down menu when selecting the font.
- Linkage is set for all fonts in the Flash Library panel.
- The name in the `Font.registerFont(****)` script is unique in the file and among all other custom fonts for this site.

\*\* If you encounter problems always remove any partially added fonts and restart Showit Sites, before trying to add the font again.